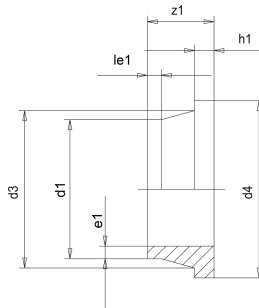


29.08.2025

PE 100 RC Stub flanges for loose flange ISO/DIN, injected



Product details:

- black
- injected, for butt welding
- Other SDR-series on request
- DIN EN ISO 15494/B, DIN EN 12201/3

Product image for illustration purposes only.

SDR	d (mm)	e (mm)	d3 (mm)	d4 (mm)	le1 (mm)	z1 (mm)	h1 (mm)	PU (Stck./pcs.)	Art. No.
11	20	2.0	27	45	30	52	7	10	010600341
11	25	2.3	33	58	27	53	9	10	010600342
11	32	3.0	41	68	25	54	10	5	010600343
11	40	3.7	50	78	25	51	11	5	010600344
11	50	4.6	61	88	27	57	12	5	010600345
11	63	5.8	75	102	23	56	14	50	010600346
11	75	6.8	89	122	27	67	16	40	010600347
11	90	8.2	105	138	43	80	17	27	010600348
11	110	10.0	125	158	37	80	18	16	010600349
11	125	11.4	132	158	40	90	25	14	010600350
11	140	12.7	155	188	35	83	25	12	010600351
11	160	14.6	175	212	52	105	25	6	010600352
11	180	16.4	186	212	65	127	30	8	010600147
11	200	18.2	232	268	65	140	32	8	010600353
11	225	20.5	235	268	65	127	32	8	010600354
11	250	22.7	285	320	66	145	35	5	010600148
11	280	25.4	291	320	80	155	35	5	010600355
11	315	28.6	335	370	86	163	35	3	010600356
11	355	32.2	373	430	100	187	40	4	010600151
11	400	36.3	427	482	95	195	46	2	010600154
11	450	40.9	514	585	65	180	60	2	010600357
11	500	45.4	530	585	65	180	60	2	010600358
11	560	50.8	616	685	65	185	60	1	010030721
11	630	57.2	644	685	65	185	60	1	010030722
11	710	64.5	737	800	70	180	70	1	010033917
17	50	3.0	61	88	27	57	12	5	010600319
17	63	3.8	75	102	23	56	14	50	010600320
17	75	4.5	89	122	27	67	16	40	010600321
17	90	5.4	105	138	43	80	17	27	010600322
17	110	6.6	125	158	37	80	18	16	010600323
17	125	7.4	132	158	45	87	18	14	010600324
17	140	8.3	155	188	39	82	18	12	010600325
17	160	9.5	175	212	52	100	18	6	010600326
17	180	10.7	186	212	75	127	20	6	010600327
17	200	11.9	233	268	75	140	24	8	010600328
17	225	13.4	235	268	76	143	24	8	010600329
17	250	14.8	285	320	71	140	25	5	010600330
17	280	16.6	291	320	90	150	25	5	010600331
17	315	18.7	335	370	93	164	25	3	010600332
17	355	21.1	373	430	100	180	30	4	010600150
17	400	23.7	427	482	105	195	33	2	010600153
17	450	26.7	514	585	65	180	46	2	010600333
17	500	29.7	530	585	65	180	46	2	010600334
17	560	33.2	615	685	65	185	50	10	010600335
17	630	37.4	642	685	65	185	50	10	010600336
17	710	42.1	737	800	65	160	50	1	010033918
17	800	47.4	840	905	60	150	54	1	010030032
17	900	53.3	944	1005	50	155	58	1	010030033
26	180	6.9							010600704
26	200	7.7	233	268	75	140	24		010036693
26	225	8.6	235	268	55	100	18		010600604
26	250	9.6	285	320	60	123	20		010033123

Execution in SDR 17, also for SDR 17,6

SDR	d (mm)	e (mm)	d3 (mm)	d4 (mm)	le1 (mm)	z1 (mm)	h1 (mm)	PU (Stck./pcs.)	Art. No.
26	280	10.7	291	320	70	120	20		010600647
26	315	12.1	335	370	80	163	20		010600798
26	355	13.6	373	430	100	180	23		010600962
26	400	15.3	427	482	105	195	33		010033124
26	450	17.2	514	585	65	180	46		010600913
26	500	19.1	530	585	65	180	46		010600882
26	560	21.4	615	685	65	185	50		010033125
26	630	24.1	642	685	65	185	50		010600653
26	710	27.2	737	800	65	160	50	1	010033919
26	800	30.6	840	905	60	150	40	1	010030034
26	900	34.4	944	1005	50	155	43	1	010030035
33	110	3.4	125	158	37	83	18	16	010600378
33	125	3.9	132	158	44	87	18	14	010600380
33	140	4.3	155	188	35	83	18		010600382
33	160	4.9	175	212	52	100	18	6	010600384
33	180	5.5	186	212	62	84	18		010600385
33	200	6.2	232	268	60	121	18	8	010600387
33	225	6.9	235	268	65	121	18	8	010600389
33	250	7.7	285	320	60	119	20	5	010600391
33	280	8.6	291	320	71	118	20	5	010600393
33	315	9.7	335	370	86	165	20	3	010600394
33	355	10.9	373	430	100	180	23		010600395
33	400	12.3	427	482	100	195	26	2	010600396
33	450	13.8	514	585	65	180	46		010600397
33	500	15.3	530	585	65	180	46	2	010600399
33	560	17.2	615	685	65	185	50		010600401
33	630	19.3	642	685	65	185	50	10	010600403
33	710	21.8	737	800	65	160	50		010033920
33	800	24.5	840	905	60	150	36	1	010030036
33	900	27.6	944	1005	50	155	40	1	010030037

Execution in SDR 17, also for SDR 17,6

All information provided in respect of technical data shall be considered non-binding. This information does not constitute a guarantee of specific properties or qualities and shall not be construed as a warranty in regard to product condition, durability or service life. Subject to modifications and errors. Our standard terms and conditions apply. For further information, please contact our applications engineering team: pipingsystems@simona.de.