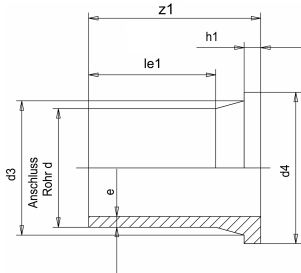


29.08.2025

PE 100 RC Stub flanges for loose flange ISO/DIN, injected



Product details:

- black
- injected, with elongated spigot, for butt welding and electrofusion welding
- Stub flanges for loose flange ANSI or JIS on request
- DIN EN ISO 15494/B, DIN EN 12201/3, DIN EN 1555/3

Product image for illustration purposes only.

SDR	d (mm)	e (mm)	d3 (mm)	d4 (mm)	le1 (mm)	z1 (mm)	h1 (mm)	PU (Stck./pcs.)	Art. No.
11	20	2.0	27	45	62	85	7	10	019400116
11	25	2.3	33	58	62	90	9	5	019400117
11	32	3.0	40	68	62	91.5	10	5	019400105
11	40	3.7	50	78	61.5	94.5	11	2	019400106
11	50	4.6	60	88	62	90	12	2	019400108
11	63	5.8	75	102	70	106	14	32	019400034
11	75	6.8	89	122	90	125	16	24	019400035
11	90	8.2	105	138	100	140	17	15	019400037
11	110	10.0	125	158	113	160	18	20	019400039
11	125	11.4	132	158	122	172	25	8	019400041
11	140	12.7	155	188	130	182	25	12	019400111
11	160	14.6	175	212	155	208	25	8	019400043
11	180	16.4	186	212	140	202	30	8	019400046
11	200	18.2	232	268	140	206	32	8	019400112
11	225	20.5	235	268	137	202	32	7	019400050
11	250	22.7	285	320	143	225	35	6	019400129
11	280	25.4	291	320	155	235	35	5	019400132
11	315	28.6	335	370	170	250	35	2	019400134
11	355	32.2	373	430	176	260	40	2	019400192
11	400	36.3	427	482	195	290	46	1	019400194
11	450	40.9	514	585	210	335	60	1	010030433
11	500	45.4	532	585	230	350	60	1	010030434
11	560	50.8	615	685	240	370	60	1	010030435
11	630	57.2	644	685	260	390	60	1	010030436
17	50	3.0	60	88	62	90	12	2	019400107
17	63	3.8	75	102	70	106	14	32	019400119
17	75	4.5	89	122	90	125	16	24	019400109
17	90	5.4	105	138	100	140	17	15	019400121
17	110	6.6	125	158	113	158	18	20	019400122
17	125	7.4	132	158	122	167	18	8	019400123
17	140	8.3	153	188	128	173	18	12	019400110
17	160	9.5	175	212	165	208	18	8	019400042
17	180	10.7	186	212	140	202	20	8	019400045
17	200	11.9	232	268	142	208	24	8	019400126
17	225	13.4	235	268	135	201	24	7	019400049
17	250	14.8	285	320	156	225	25	6	019400128
17	280	16.6	291	320	167	236	25	5	019400131
17	315	18.7	335	370	180	250	25	2	019400133
17	355	21.1	373	430	179	261	30	2	019400191
17	400	23.7	427	482	195	290	33	1	019400193
17	450	26.7	514	585	225	335	46	1	010030429
17	500	29.7	532	585	240	350	46	1	010030430
17	560	33.2	616	685	250	370	50	1	010030431
17	630	37.4	644	685	270	390	50	1	010030432

Execution in SDR 17, also for SDR 17,6 • Dimensions d 710, d 800 and d 900 with extended pipe

All information provided in respect of technical data shall be considered non-binding. This information does not constitute a guarantee of specific properties or qualities and shall not be construed as a warranty in regard to product condition, durability or service life. Subject to

modifications and errors. Our standard terms and conditions apply. For further information, please contact our applications engineering team:
pipingsystems@simona.de.