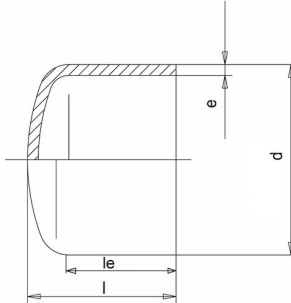


29.08.2025

PE 100 RC End caps, injected



Product details:

- black
- injected, with elongated spigot, for butt welding and electrofusion welding
- DIN EN ISO 15494/B, DIN EN 12201/3, DIN EN 1555/3

Product image for illustration purposes only.

SDR	d (mm)	e (mm)	le (mm)	PN (bar)	Length (mm)	PU (Stck./pcs.)	Art. No.
11	20	2.0	41	16	49	30	013900314
11	25	2.3	41	16	50	20	013900315
11	32	3.0	46	16	56	10	013900316
11	40	3.7	49	16	61	10	013900317
11	50	4.6	59	16	70	5	013900320
11	63	5.8	66	16	84	5	013900323
11	75	6.8	73	16	94	1	013900326
11	90	8.2	82	16	104	36	013900329
11	110	10.0	92	16	117	18	013900332
11	125	11.4	93	16	128	18	013900335
11	140	12.7	97	16	136	12	013900338
11	160	14.6	108	16	156	6	013900341
11	180	16.4	113	16	167	12	013900344
11	200	18.2	117	16	180	10	013900347
11	225	20.5	127	16	203	6	013900350
11	250	22.7	138	16	217	4	019600003
11	280	25.4	151	16	239	6	019600056
11	315	28.6	158	16	256	2	019600062
11	355	32.2	175	16	291	2	019600058
11	400	36.3	193	16	316	2	019600060
17	50	3.0	59	10	70	5	013900319
17	63	3.8	66	10	83	5	013900322
17	75	4.5	72	10	94	40	013900325
17	90	5.4	84	10	106	1	013900328
17	110	6.6	92	10	114	18	013900331
17	125	7.4	92	10	127	18	013900334
17	140	8.3	97	10	136	12	013900337
17	160	9.5	107	10	155	6	013900340
17	180	10.7	114	10	166	12	013900343
17	200	11.9	117	10	179	10	013900346
17	225	13.4	127	10	203	6	013900349
17	250	14.8	140	10	216	4	019600054
17	280	16.6	149	10	238	6	019600055
17	315	18.7	158	10	258	2	019600061
17	355	21.1	175	10	281	2	019600057
17	400	23.7	195	10	310	2	019600059

Execution in SDR 17, also for SDR 17,6

All information provided in respect of technical data shall be considered non-binding. This information does not constitute a guarantee of specific properties or qualities and shall not be construed as a warranty in regard to product condition, durability or service life. Subject to modifications and errors. Our standard terms and conditions apply. For further information, please contact our applications engineering team: pipingsystems@simona.de.