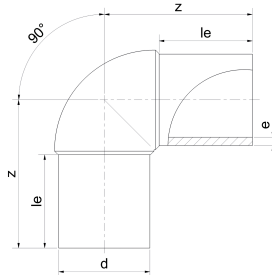


29.08.2025

PE 100 RC Elbows 90°, injected



Product details:

- black
- injected, with elongated spigot, for butt welding and electrofusion welding
- Based on DIN EN ISO 15494/B, DIN EN 1555/3, DIN EN 12201/3

Product image for illustration purposes only.

SDR	d (mm)	e (mm)	le1 (mm)	z1 (mm)	PN (bar)	Angle (°)	kg/piece	PU (Stck./pcs.)	Art. No.
11	20	1.9	52	73	16	90	0.021	5	019200177
11	25	2.3	56	80	16	90	0.034	5	019200178
11	32	3.0	70	95	16	90	0.065	5	019200179
11	40	3.7	74	105	16	90	0.097	2	019200180
11	50	4.6	80	108	16	90	0.153	2	019200181
11	63	5.8	80	117	16	90	0.265	24	019200182
11	75	6.8	90	132	16	90	0.415	16	019200071
11	90	8.2	91	142	16	90	0.645	12	019200183
11	110	10.0	99	162	16	90	1.081	14	019200184
11	125	11.4	103	169	16	90	1.500	6	019200072
11	140	12.7	120	200	16	90	2.292	5	019200257
11	160	14.6	142	233	16	90	3.363	4	019200073
11	180	16.4	142	247	16	90	4.440	4	019200185
11	200	18.2	153	262	16	90	6.075	5	019200186
11	225	20.5	154	281	16	90	8.030	3	019200187
11	250	22.7	132	293	16	90	10.560	2	019200285
11	280	25.4	144	330	16	90	15.030	2	019200287
11	315	28.6	153	370	16	90	21.217	1	019200289
17	50	3.0	80	108	10	90	0.105	2	019200160
17	63	3.8	80	116	10	90	0.182	24	019200069
17	75	4.5	89	129	10	90	0.287	16	019200162
17	90	5.4	90	143	10	90	0.465	12	019200164
17	110	6.6	99	160	10	90	0.765	14	019200166
17	125	7.4	102	171	10	90	1.030	6	019200168
17	140	8.3	120	200	10	90	1.610	5	019200307
17	160	9.5	142	233	10	90	2.375	4	019200170
17	180	10.7	141	243	10	90	3.035	4	019200172
17	200	11.9	152	263	10	90	4.230	5	019200174
17	225	13.4	153	277	10	90	5.630	3	019200176
17	250	14.8	132	293	10	90	7.800	2	019200284
17	280	16.6	144	325	10	90	10.583	2	019200286
17	315	18.7	153	370	10	90	15.810	1	019200288

Execution in SDR 17, also for SDR 17,6

All information provided in respect of technical data shall be considered non-binding. This information does not constitute a guarantee of specific properties or qualities and shall not be construed as a warranty in regard to product condition, durability or service life. Subject to modifications and errors. Our standard terms and conditions apply. For further information, please contact our applications engineering team: pipingsystems@simona.de.