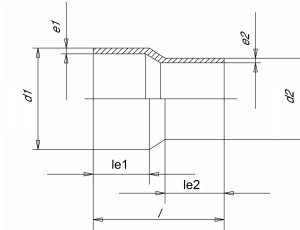


29.08.2025

## PE 100 RC Reducers concentric, injected



**Product details:**

- black
- injected, with elongated spigot, for butt welding and electrofusion welding
- DIN EN ISO 15494/B, DIN EN 12201/3, DIN EN 1555/3

Product image for illustration purposes only.

SDR	d1 (mm)	e (mm)	d2 (mm)	e2 (mm)	le1 (mm)	le2 (mm)	Length (mm)	PU (Stck./pcs.)	Art. No.
11	25	2.3	20	1.9	41	41	90	10	010013260
11	32	3.0	20	2	44	41	101	5	010013261
11	32	3.0	25	2.3	44	41	100	5	010013262
11	40	3.7	25	2.3	49	41	104	5	010013264
11	40	3.7	32	3	49	44	105	5	010013265
11	50	4.6	25	2.3	56	42	130	5	010013266
11	50	4.6	32	3	57	47	132	2	010013267
11	50	4.6	40	3.7	55	51	134	2	010013268
11	63	5.8	32	3	63	44	144	60	010013269
11	63	5.8	40	3.7	63	49	147	2	010013270
11	63	5.8	50	4.6	64	58	152	50	010013271
11	75	6.8	40	3.7	70	49	150		010013272
11	75	6.8	50	4.6	70	55	155	1	010013273
11	75	6.8	63	5.8	70	65	171	30	010013274
11	90	8.2	50	4.6	79	57	174	20	010013275
11	90	8.2	63	5.8	79	70	182	20	010013276
11	90	8.2	75	6.8	80	73	185	20	010013277
11	110	10.0	50	4.6	82	55	170		010013278
11	110	10.0	63	5.8	84	69	185	16	010013279
11	110	10.0	75	6.8	84	74	185	16	010013280
11	110	10.0	90	8.2	84	81	186	16	010013281
11	125	11.4	63	5.8	91	69	200	10	010013282
11	125	11.4	75	6.8	90	75	210		010010602
11	125	11.4	90	8.2	91	80	202	9	010013283
11	125	11.4	110	10	90	90	200	9	010013284
11	140	12.7	75	6.8	114	75	231		010013285
11	140	12.7	90	8.2	112	86	237	12	010013286
11	140	12.7	110	10	116	90	230	12	010013287
11	140	12.7	125	11.4	117	96	235	12	010013288
11	160	14.6	90	8.2	109	84	254	10	010013289
11	160	14.6	110	10	110	89	254	10	010013290
11	160	14.6	125	11.4	110	95	254	10	010013291
11	160	14.6	140	12.7	111	104	255	10	010013292
11	180	16.4	90	8.2	106	79	245	8	010013293
11	180	16.4	110	10	124	94	275	8	010013294
11	180	16.4	125	11.4	105	87	245	8	010013295
11	180	16.4	140	12.7	120	110	277		010013296
11	180	16.4	160	14.6	126	125	279	8	010013297
11	200	18.2	140	12.7	123	114	279	8	010013298
11	200	18.2	160	14.6	125	115	280	6	010013299
11	200	18.2	180	16.4	126	118	277	5	010013300
11	225	20.5	140	12.7	133	114	290		010013301
11	225	20.5	160	14.6	132	123	295	4	010013302
11	225	20.5	180	16.4	130	118	285	4	010013303
11	225	20.5	200	18.2	126	120	272	4	010013304
11	250	22.7	160	14.6	150	110	320	3	010013305
11	250	22.7	180	16.4	150	105	325	3	010013306
11	250	22.7	200	18.2	150	120	330	2	010013307
11	250	22.7	225	20.5	150	130	340	2	010013308
11	280	25.4	200	18.2	140	116	345	2	010013309
11	280	25.4	225	20.5	142	122	335	2	010013310
11	280	25.4	250	22.7	139	135	340	2	010013311

Execution in SDR 17, also for SDR 17,6

SDR	d1 (mm)	e (mm)	d2 (mm)	e2 (mm)	le1 (mm)	le2 (mm)	Length (mm)	PU (Stck./pcs.)	Art. No.
11	315	28.6	200	18.2	150	112	355		010036621
11	315	28.6	225	20.5	150	125	365	4	010013312
11	315	28.6	250	22.7	150	134	369	4	010013313
11	315	28.6	280	25.4	150	145	365	4	010013314
17	50		25						019700195
17	50	3.0	40	2.4	56	52	134		019700197
17	63	3.8	32	2.9	63	46	142	2	019700198
17	63	3.8	50	3	64	58	152	2	019700200
17	75		40						019700201
17	75	4.5	50	3	70	55	155		014900878
17	75	4.5	63	3.8	70	63	166	20	014900879
17	90	5.4	63	3.8	79	63	177	20	014900880
17	90	5.4	75	4.5	80	73	185	20	014900881
17	110	6.6	63	3.8	84	68	185	16	014900795
17	110	6.6	75	4.5	83	73	183	16	019700273
17	110	6.6	90	5.4	83	80	185	14	014900796
17	125	7.4	63	3.8	90	68	200	10	014900797
17	125	7.4	75	4.5	90	75	210		010010601
17	125	7.4	90	5.4	90	80	200	9	014900798
17	125	7.4	110	6.6	90	90	200	9	014900799
17	140	8.3	75	4.5	114	71	231		019700440
17	140	8.3	90	5.4	112	86	235	12	019700432
17	140	8.3	110	6.6	114	91	237	12	019700222
17	140	8.3	125	7.4	117	96	235	14	014900882
17	160	9.5	90	5.4	109	84	254	10	014900800
17	160	9.5	110	6.6	110	89	252	10	014900211
17	160	9.5	125	7.4	110	95	254	10	014900801
17	160	9.5	140	8.3	110	106	254	10	014900802
17	180	10.7	90	5.4	105	81	244	10	019700326
17	180	10.7	110	6.6	124	94	275	8	019700441
17	180	10.7	125	7.4	105	87	250	8	014900883
17	180	10.7	140	8.3	123	114	277		019700223
17	180	10.7	160	9.5	126	125	279	8	014900884
17	200	11.9	140	8.3	123	114	279	6	019700442
17	200	11.9	160	9.5	125	115	280	6	014900212
17	200	11.9	180	10.7	120	120	272	5	019700224
17	225	13.4	140	8.3	133	114	290		014900803
17	225	13.4	160	9.5	134	123	295	4	014900213
17	225	13.4	180	10.7	125	118	285	4	014900804
17	225	13.4	200	11.9	126	120	272	4	019700443
17	250	14.8	160	9.5	150	110	320	3	014901043
17	250	14.8	180	10.7	150	110	325	6	014901044
17	250	14.8	200	11.9	150	120	330	2	014901045
17	250	14.8	225	13.4	150	130	340	2	014901046
17	280	16.6	200	11.9	142	116	345	2	019700146
17	280	16.6	225	13.4	140	124	335	2	019700140
17	280	16.6	250	14.8	139	134	340	2	019700147
17	315	18.7	200	11.9	150	112	355		010036620
17	315	18.7	225	13.4	152	125	371	2	019700148
17	315	18.7	250	14.8	151	133	367	4	019700134
17	315	18.7	280	16.6	150	140	369	4	019700159

Execution in SDR 17, also for SDR 17,6

All information provided in respect of technical data shall be considered non-binding. This information does not constitute a guarantee of specific properties or qualities and shall not be construed as a warranty in regard to product condition, durability or service life. Subject to modifications and errors. Our standard terms and conditions apply. For further information, please contact our applications engineering team: [pipingsystems@simona.de](mailto:pipingsystems@simona.de).